



PRE WASH UNIT



Operating principle

The asparagus pre wash unit is designed to remove the worst dirt from the asparagus. This is done when the asparagus is coming from the field and before the asparagus is stored in cooling tray's or goes through the shock-cooler. The trays with asparagus need to have holes in the bottom to let the sand and dirt out.

The asparagus pre-wash machine is equipped with a recycle installation. The water level will stay steady because of a float valve mounted to the pump or water supply. The pump is separate because of the need to clean the recycle bin. Connection from pump is Storz connections.

The recycle bin has pallet foots for transportation with a forklift truck. This is for easy transportation to dispose sand and dirt. The recycle bin is equipped with a large opening to clean the bin. The pre-wash tunnel is equipped with a conveyor chain and two water distributors. The complete machine can be controlled with one On / Off switch.

The pump is equipped with a switch and a motor safety switch. The wash tunnel is equipped with a switch suitable for automatic starting and stopping of the pump. The pump can be used for other purposes because it's connected to the wash tunnel with a plug.

Advantages

Cooling of the product because of the large amount of cold water

Less sand in other machinery

Maintenance friendly

Options

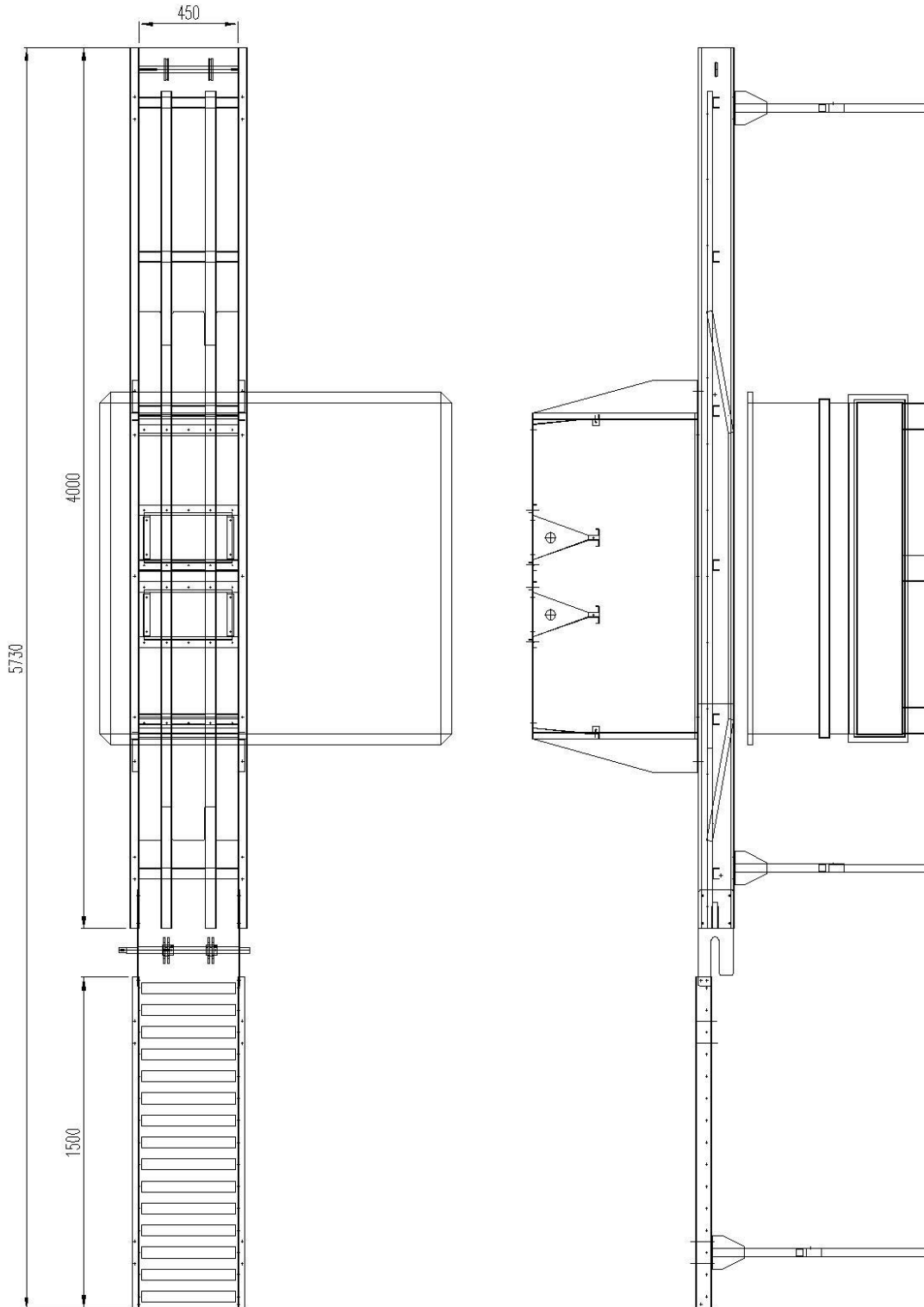
Variable speed gear for conveyor chain.

Technical Data	
Length without rollerconveyor	4.250mm
Rollerconveyor extension	1.500mm
Supply height	1.000mm
Supply width	450mm
Chain velocity	1 mtr/min
Volume water bin	1.500 ltr
Pump capacity	2x24m ³ /h
Pump Power	2x0.55KW 400V
Conveyor chain power	0.12KW 400V
Frame	SS304



Christiaens

Agro Systems



Our products are subject to continuous development and improvement. Moreover, the machines are often adapted to meet the needs of users. This could mean that your machine does not exactly match the description given in the manual.